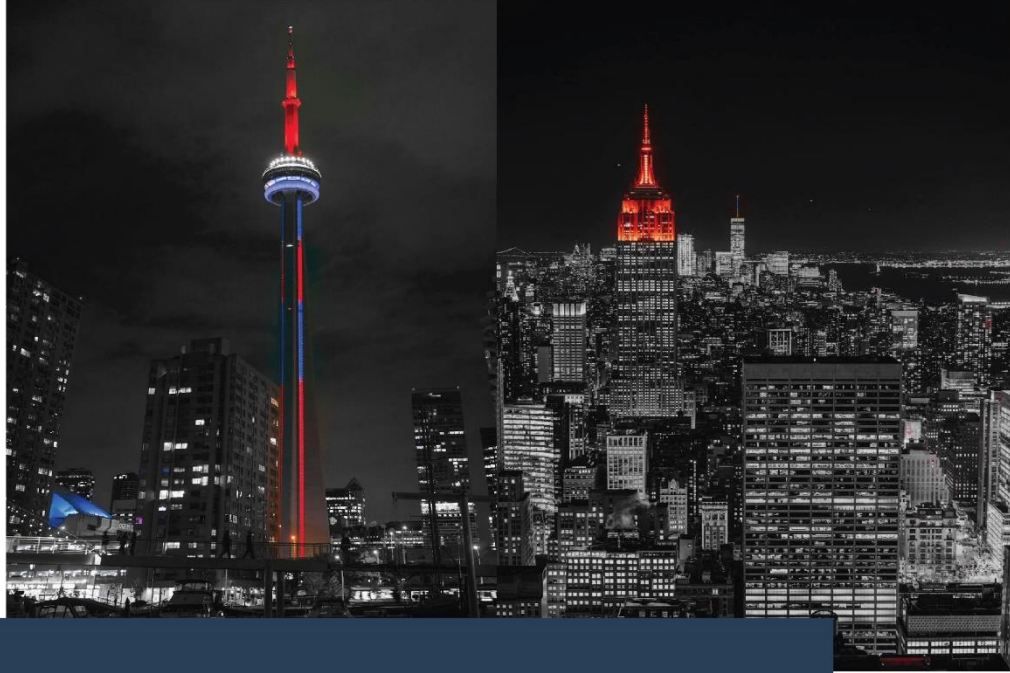




 www.atheerabdullah.com



مؤسسة أثير عبدالله بن شليويح المقاطي التجارية
Ather Abdullah Bin Shliouh Trading Est.

 +966 59 882 2996

 +966 58 094 3175

 sales@atheerabdullah.com

 naqeeb@atheerabdullah.com



TABLE OF CONTENTS

● ABOUT US	01
● LIGHT EQUIPMENT'S	03
● FLOOD LIGHT EQUIPMENT'S	08
● SOLAR FLOOD LIGHTS	11
● STREET LIGHTS	12
● STREET SOLAR LIGHTS	13
● HIGH BAYS LIGHTS	14
● LED COB PANEL (INSIDE PANEL)	15
● LED LIGHTS	16
● TUBE LIGHT FIXTURES	18
● GARDEN / TRACK LIGHT	19
● MAGNETIC LIGHTS	20
● STRIP LIGHT	21
● PEDESTAL FAN / INDUSTRIAL WALL FAN/ INDUSTRIAL MIST ...	22
● FAN	23
● WALL CEILING FAN	24
● SOCKETS AND SWITCHES	27
● INDUSTRIAL SOCKET	29
● CABLE LUGS AND TERMINALS	31
● STEEL CONDUITS	



ABOUT US

Established in 2017, ATHEER Abdullah bin shliouh Trading Est. is dedicated to providing exceptional service and premium-quality products to meet the evolving needs of our customers. With a focus on trust, reliability, and innovation, we aim to build long-lasting relationships by delivering tailored solutions that enhance efficiency and add value for our present and future clients.

We are a one-stop destination for all industrial and commercial needs, offering a comprehensive range of products including outdoor and indoor lighting, power tools, sanitary wares, safety equipment, valves, hose connectors, generators, transformers, welding equipment, hardware and locks, construction tools, electrical cable accessories, switches and breakers, and gardening tools. Our unwavering commitment to quality ensures reliable solutions for every project and requirement.





Vision Statement

We envision a future where our innovative lighting solutions illuminate every corner of modern life. We are committed to providing high-quality, energy-efficient products promote sustainability and well-being. By embracing cutting-edge technology and exceptional customer service, we strive to empower our clients to create vibrant, sustainable environment



Mission Statement

Our mission is to deliver world-class Industrial and commercial products that enhance energy efficiency, safety, and performance. We aim to build lasting relationships with our clients by ensuring exceptional service, competitive pricing, and continuous innovation in product offerings.

Our Clients

Our major's clients are Nada, Najran Co, and multiple vendors & suppliers of Aramco, Neom, Yamama, Sraco, Nesma, Expertise and etc.



KHIND®

 **BOSCH**

ABRO®

Legrand

DEWALT

Schneider
Electric

Honeywell



OSRAM 

ABB

 **الفيشار**
alfanar

3M

PCE
Connection
to the future

BRANDS



ALRAED  **الراشد**

 **PLATO**

MAZALLA



MK®

V-TAC

LUXIFY
MEASURE YOUR LIGHT

A-Star

Brillo
Light Solutions

MODI®

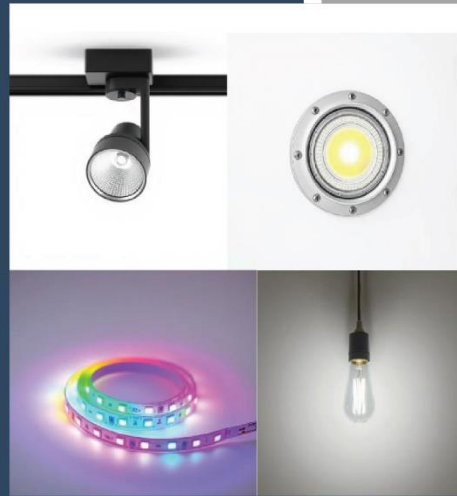


Himel



LIGHT EQUIPMENT'S

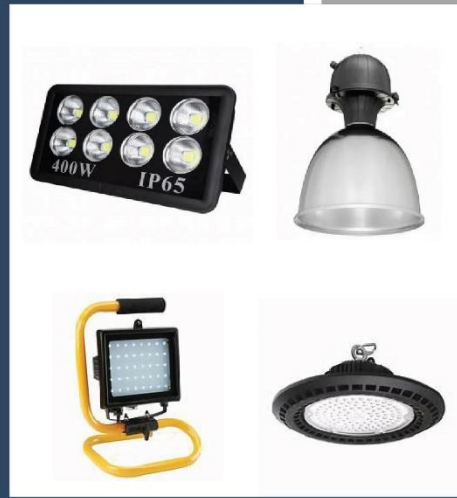
Indoor Lightings



Outdoor Lightings



Flood lights & High-Bay



Electrical Cables





LIGHT EQUIPMENT'S

Switches & Sockets



Incandescent & CFL Lamps



Metal Halide & MVR Lamps



Solar & Portable lights





EQUIPMENT'S

Construction Material



Gardening Tools



Air & Water Hose



Safety Gear & Equipment's





EQUIPMENT'S

Industrial Socket & Switch



Industrial & Comm Tapes



Hardware Items



Sanitary Wares





FLOOD LIGHT EQUIPMENT'S

FLOOD LIGHT (APPLE SMD) MODEL



Material -	Aluminium
Body Color -	Black
IP Rating -	IP 66
Color Temp -	6K, 4K, 3K, Green, Red, Blue, RGB
Lm/W -	80 W
CRI -	80
PF -	> 0.9
Input Voltage -	AC 100 - 240V
Life Span -	30000 - 50000H
Rated Power -	50W, 100W, 150W, 200W, 300W, 400W.

FLOOD LIGHT (WHITE SHEET SMD) MODEL



Material -	Aluminium
Body Color -	Black
IP Rating -	IP 66
Color Temp -	6K, 4K, 3K, Green
Lm/W -	80 W
CRI -	80
PF -	> 0.9
Input Voltage -	AC 100 - 240V
Life Span -	30000 - 50000H
Rated Power -	50W, 100W, 200W, 300W, 400W 500W, 600W, 1000W, 1500W- 2000W.

FLOOD LIGHT (BACKPACK) MODEL



Material -	Aluminium
Body Color -	Black
IP Rating -	IP 66
Color Temp -	6K.
Lm/W -	80 W
CRI -	80
PF -	> 0.9
Input Voltage -	AC 100 - 240V
Life Span -	30000 - 50000H
Rated Power -	200W, 300W, 400W 600W, 800W, 1000W.

FLOOD LIGHT (RW) MODEL



Material -	Aluminium
Body Color -	Black
IP Rating -	IP 66
Color Temp -	6K, 4K, 3K, Green
Lm/W -	80 W
CRI -	80
PF -	> 0.9
Input Voltage -	AC 100 - 240V
Life Span -	30000 - 50000H
Rated Power -	50W, 100W, 150W, 200W, 300W, 400W, 600W.



FLOOD LIGHT EQUIPMENT'S

FLOOD LIGHT (OVAL) MODEL



Material -	Aluminium
Body Color -	Black
IP Rating -	IP 66
Color Temp -	6K, 3K.
Lm/W -	80 W
CRI -	70
PF -	> 0.9
Input Voltage -	AC 100 - 240V
Life Span -	30000 - 50000H
Rated Power -	50W, 100W, 200W, 300W, 400W, 600W, 800W, 1000W.

FLOOD LIGHT (PHILIPS) LumiLeds MODEL



Material -	Aluminium
Body Color -	Grey
IP Rating -	IP 66
Color Temp -	6K
Lm/W -	130 W
CRI -	80
PF -	> 0.9
Input Voltage -	AC 100 - 240V
Life Span -	30000 - 50000H
Rated Power -	100W, 200W, 300W, 400W, 600W.

FLOOD LIGHT (PH) MODEL



Material -	Aluminium
Body Color -	Grey
IP Rating -	IP 67
Color Temp -	6K
Lm/W -	80 W
CRI -	80
PF -	> 0.9
Input Voltage -	AC 100 - 240V
Life Span -	30000 - 50000H
Rated Power -	50W, 100W, 200W, 300W, 400W.

FLOOD LIGHT (HD-CUP) HEAVY- DUTY MODEL

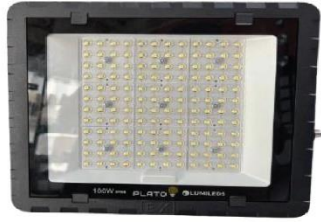


Material -	Aluminium
Body Color -	Black
IP Rating -	IP 66
Color Temp -	6K
Lm/W -	80 W
CRI -	80
PF -	> 0.9
Input Voltage -	AC 100 - 240V
Life Span -	30000 - 50000H
Rated Power -	400W, 600W, 800W.



FLOOD LIGHTS

LED EXPLOSION PROOF FL (LumiLeds)



Material -	Aluminium, Anti-Corrosion
Body Color -	Black
IP Rating -	IP 66
Color Temp -	6K, 3K
Lm/W -	140 W
Impact Protection -	IK 08
PF -	> 0.5
Input Voltage -	AC 100 - 240V
Life Span -	50000H
Rated Power -	100W, 200W, 400W

CANOPY FLOOD LIGHTS (LumiLeds)



Material -	Aluminium
Body Color -	White
IP Rating -	IP 66
Color Temp -	6K, 3K
Lm/W -	130 W
CRI -	80
PF -	> 0.9
Input Voltage -	AC 100 - 240V
Life Span -	50000H
Rated Power -	100W, 150W, 200W

LED PORTABLE FLOOD LIGHTS



Material -	Aluminium
Body Color -	Grey
IP Rating -	IP 66
Color Temp -	6500K
Lm/W -	80 W
Duration -	Full (4H), Med (6H), LOW (10H)
Type -	Rechargeable
Input Voltage -	AC 100 - 240V
Life Span -	30000H
Rated Power -	100W, 200W, 300W.

SOLAR INBUILT & RECHARGABLE FLOOD LIGHTS



Material -	Aluminium
Body Color -	Orange
IP Rating -	IP 66
Color Temp -	6500K
Lm/W -	80 W
Duration -	Full (4H), Med (6H), LOW (10H)
Type -	Solar Inbuilt & Rechargeable
Input Voltage -	AC 100 - 240V
Life Span -	30000H
Rated Power -	200W, 400W.



SOLAR FLOOD LIGHTS

SOLAR FLOODLIGHT T-HD MODEL



Material -	Aluminium & ABS shell
Body Color -	Grey
IP Rating -	IP 65
Color Temp -	65K
Lm/W -	120 W
Duration -	Full(8H), Med(10H), LOW(12H)
Type -	Rechargeable
Life Span -	30000H
Rated Power -	100W, 200W, 300W, 400W

SOLAR FLOODLIGHT UT (LumiLeds) MODEL



Material -	Aluminium
Body Color -	Grey
IP Rating -	IP 66
Color Temp -	65K
Lm/W -	130 W
Duration -	Full(8H), Med(10H), LOW(12H)
Type -	Rechargeable
Lumens per Watt	130Lm/W
Rated Power -	600W, 800W, 1200W.

SOLAR FLOODLIGHT M402 MODEL



Material -	Aluminium
Body Color -	Black
IP Rating -	IP 66
Color Temp -	65K
Lm/W -	120 W
Duration -	Full(8H), Med(10H), LOW(12H)
Type -	Rechargeable
Life Span -	30000H
Rated Power -	1500W, 2000W

SOLAR FLOOD LIGHT T-A MODEL



Material -	Aluminium
Body Color -	Grey
IP Rating -	IP 65
Color Temp -	65K
Lm/W -	130 W
Duration -	Full(8H), Med(10H), LOW(12H)
Type -	Rechargeable
Life Span -	30000H
Rated Power -	400W, 600W, 800W.





STREET LIGHTS

STREET LIGHT DB MODEL



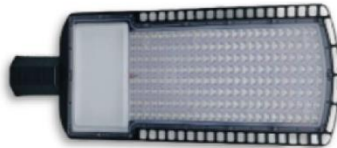
Material -	Aluminium
Body Color -	Grey
IP Rating -	IP 65
Color Temp -	6K.
Lm/W -	130
CRI -	80
PF -	> 0.5
Input Voltage -	AC 100 - 240V
Type -	Inbuilt with light dectetor
Rated Power -	200W, 300W, 400W

STREET LIGHT BJ COB MODEL



Material -	Aluminium
Body Color -	Black
IP Rating -	IP 65
Color Temp -	6K, 3K
Lm/W -	80
CRI -	70
PF -	> 0.5
Input Voltage -	AC 100 - 240V
Rated Power -	100W, 150W, 200W, 250W

STREET LIGHT HSMD MODEL



Material -	Aluminium
Body Color -	Grey
IP Rating -	IP 65
Color Temp -	6K.
Lm/W -	80
CRI -	80
PF -	> 0.9
Input Voltage -	AC 100 - 240V
Rated Power -	50W, 100W, 150W, 200W, 300W

STREET LIGHT CN MODEL



Material -	Aluminium
Body Color -	Grey
IP Rating -	IP 66
Color Temp -	6K.
Lm/W -	120
CRI -	80
PF -	> 0.9
Input Voltage -	AC 100 - 240V
Rated Power -	150W, 200W.



SOLAR STREET LIGHTS

SOLAR OVAL STREET LIGHT



Material -	Aluminium
Body Color -	Black
IP Rating -	IP 65
Color Temp -	6500K
Lm/W -	120Lm/W
Duration -	Full(8H), Med(10H), LOW(12H)
Type -	Solar SL with Inbuilt Panel
Battery -	3.2V / 8,10,15AH LifePO4
Life Span -	30000H
Rated Power -	400W, 600W, 1000W

SOLAR GD STREET LIGHT



Material -	Aluminium
Body Color -	Grey
IP Rating -	IP 65
Color Temp -	6500K
Lm/W -	120Lm/W
Duration -	Full(8H), Med(10H), LOW(12H)
Type -	Solar SL with Inbuilt Panel
Battery -	3.2V / 8,10,15AH LifePO4
Life Span -	30000H
Rated Power -	400W, 600W, 800W, 1000W

SOLAR KD STREET LIGHT



Material -	Aluminium
Body Color -	Grey
IP Rating -	IP 65
Color Temp -	6500K
Lm/W -	120Lm/W
Duration -	Full(8H), Med(10H), LOW(12H)
Type -	Solar SL with Inbuilt Panel
Battery -	3.2V / 8,10,15AH LifePO4
Life Span -	30000H
Rated Power -	400W, 600W, 800W, 1000W

SOLAR GF-OM STREET LIGHT MODEL



Material -	Aluminium
Body Color -	Grey
IP Rating -	IP 65
Color Temp -	6500K
Lm/W -	120Lm/W
Duration -	Full(8H), Med(10H), LOW(12H)
Type -	Solar SL with Inbuilt Panel
Battery -	3.2V / 8,10,15AH LifePO4
Life Span -	30000H
Rated Power -	600W, 800W, 1000W, 3000W



HIGH BAYS LIGHTS

HIGH - BAY DOME MODELS



Material -	Aluminium
Body Color -	Black & Silver
IP Rating -	IP 66
Color Temp -	6K
Lm/W -	80 W
CRI -	80
PF -	> 0.9
Input Voltage -	AC 100 - 240V
Life Span -	30000 - 50000H
Rated Power -	150W, 200W, 300W. 400W.

HIGH - BAY UFO MODELS



Material -	Aluminium
Body Color -	Black
IP Rating -	IP 66
Color Temp -	6K, 3K
Lm/W -	130 W
CRI -	80
PF -	> 0.9
Input Voltage -	AC 100 - 240V
Life Span -	30000 - 50000H
Rated Power -	150W, 200W, 300W. 600W

METAL HALIDE HIGH - BAY FIXTURE



Material -	Aluminium or Steel
Body Color -	Black & Silver
IP Rating -	Indoor
Color Temp -	According to lamp
Lm/W -	75 / 100 W
Lamps -	Indirect
Type -	metal halide, sodium
Input Voltage -	AC 100 - 240V
Life Span -	30000 - 50000H
Rated Power -	150W, 250W, 400W 400W, 1000W.

LED HIGH - BAY TOWER LIGHT MODEL



Material -	Aluminium
Body Color -	Black
IP Rating -	IP 65
Color Temp -	6K, 3K
Lm/W -	120 W
CRI -	80
PF -	> 0.9
Input Voltage -	AC 100 - 240V
Life Span -	30000 - 50000H
Rated Power -	150W, 200W, 300W, 400W, 600W



LED COB PANEL (INSIDE PANEL)

COB 7W PANEL (3'')



Rated power -	7W
Lamp displacement factor -	>0.7
Rated life time -	30000 Hour
Color rendering index -	80
Rated voltage -	AC100-240V
Frequency -	50/60 Hz
Efficiency(Lm/w) -	80Lm/w
Size -	90 X 35mm

COB 20W PANEL (5'5') / (6'')



Rated power -	20W
Lamp displacement factor -	>0.7
Rated life time -	30000 Hour
Color rendering index -	80
Rated voltage -	AC100-240V
Frequency -	50/70 Hz
Efficiency(Lm/w) -	80Lm/w
Size -	160mm

COB 10W PANEL (4'')



Rated power -	10W
Lamp displacement factor -	>0.7
Rated life time -	30000 Hour
Color rendering index -	80
Rated voltage -	AC100-240V
Frequency -	50/70 Hz
Efficiency(Lm/w) -	80Lm/w
Size -	123 X 44mm

COB 30W PANEL (8'')



Rated power -	30W
Lamp displacement factor -	>0.9
Rated life time -	30000 Hour
Color rendering index -	80
Rated voltage -	AC100-240V
Frequency -	50/70 Hz
Efficiency(Lm/w) -	80Lm/w
Size -	220mm



LED LIGHTS

LED INSIDER PANELS



Material -	Aluminium or PVC
Sizes -	3Inch, 4Inch, 6Inch, 8 & 10 Inch
Body Type -	Round or Square
Color Grade -	2700K / 4000K / 6500K
Beam Angle -	120°
Lifespan -	30000 - 50000 H
CRI -	>80
Operating Temp -	Minus 20°C to 50°C
Power -	7 - 12W, 15 - 24W, 30 - 50W
Input Voltage -	AC 100V – 240V, 50/60Hz
Body Type -	Froasted or Clear
Usage -	Under Ceiling

LED SURFACE PANELS



Material -	Aluminium or PVC
Sizes -	3Inch, 4Inch, 6Inch, 8 & 10 Inc
Body Type -	Round or Square
Color Grade -	2700K / 4000K / 6500K
Beam Angle -	120°
Lifespan -	30000 - 50000 H
CRI -	>80
Operating Temp -	Minus 20°C to 50°C
Power -	7 - 12W, 15 - 24W, 30 - 50W
Input Voltage -	AC 100V – 240V, 50/60Hz
Body Type -	Froasted or Clear
Usage -	Surface Mounted

LED ALL TYPE OF BULBS



Material -	Aluminium or Plastic
Base -	E14 , E27, E40.
Body Type -	Round, Cylinder or Square
Color Grade -	2700K / 4000K / 6500K
Beam Angle -	180°
Lifespan -	30000 - 50000 H
CRI -	>80
Operating Temp -	Minus 20°C to 50°C
Power -	3/5W, 9/12/15W, 30/100W/200W
Input Voltage -	AC 100V – 240V, 50/60Hz, DC12V.
Body Type -	Froasted or Clear
Usage -	Indoor & Outdoor Purposes.

WALL LAMP / BULKHEAD LIGHT



Material -	Aluminium or Plastic
Base -	Inbuilt or E27.
Body Type -	Oval Shape
Color Grade -	2700K / 4000K / 6500K, R1
Beam Angle -	120°
Lifespan -	30000 - 50000 H
CRI -	>80
Operating Temp -	Minus 20°C to 50°C
Power -	10/15W, 20/30W.
Input Voltage -	AC 100V – 240V, 50/60Hz.
Body Type -	Froasted or Clear
Usage -	Indoor & Outdoor Purpos



LED LIGHTS

LED T8 TUBE Lights 4F & 2F



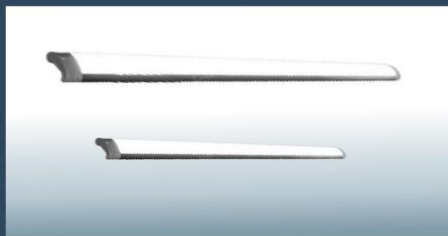
Material -	Plastic or Aluminium
Tube -	Polycarbonate or glass
Base Type -	T8
Color Grade -	2700K / 4000K / 6500K
Beam Angle -	120°
Lifespan -	30000 - 50000 H
CRI -	>80
Operating Temp -	Minus 20°C to 50°C
Power -	(18 - 30W) (10 - 18W)
Input Voltage -	100 - 240V
Sizes -	60cm, 120cm
Easy Installation -	Direct replacement no ballast required.

LED T5 TUBE LIGHTS



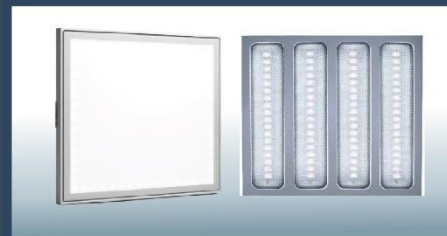
Material -	Plastic or Aluminium
Tube -	Polycarbonate or glass
Base Type -	T5
Color Grade -	2700K / 4000K / 6500K
Beam Angle -	120°
Lifespan -	30000 - 50000 H
CRI -	>80
Operating Temp -	Minus 20°C to 50°C
Power -	6W, 10W, 15W, 18W
Input Voltage -	100 - 240V
Sizes -	30cm, 60cm, 90cm, 120cm.
Easy Installation -	Direct replacement no ballast required.

Purification LED Fixtures



Material -	Plastic or Aluminium
Sizes -	60cm, 120cm
Base Type -	Ceiling Mount
Color Grade -	2700K / 4000K / 6500K
Beam Angle -	120°
Lifespan -	30000 - 50000 H
CRI -	>80
Operating Temp -	Minus 20°C to 50°C
Power -	30-40W, 48-60W, 80-120W
Input Voltage -	AC 100V – 240V, 50/60Hz
Body Type -	Froasted or Clear

60X60 LED PANELS



Material -	Aluminium
Panel Size:	60cm x 60cm (23.6 in x 23.6 in)
Color Grade -	2700K / 4000K / 6500K
Beam Angle -	120°
Lm/W -	80 W
Lifespan -	30000 - 50000H
CRI -	>80
Operating Temp -	Minus 20°C to 50°C
Power -	40W, 60W, 72W, 100W, 120W.
Input Voltage -	AC 100V – 240V, 50/60Hz
Body type -	Surface, Insider.



TUBE LIGHT FIXTURES



Specification	1x20 LED Tube	1x40 LED Tube
Length	600 mm (24 inches)	1200 mm (48 inches)
Wattage	8W–10W	18W–20W
Luminous Output (lm)	800–1000	1600–2000
Energy Efficiency	80–100 lm/W	80–100 lm/W
Color Temperature (K)	2700K, 4000K, 6500K	2700K, 4000K, 6500K
Lifespan	25,000–50,000 hours	25,000–50,000 hours
Voltage	100–277V AC	100–277V AC
Beam Angle	120° to 160°	120° to 160°
Body Type -	Single Frame without Cover Frame with Cover Frame with Waterproof Cover	Single Frame without Cover Frame with Cover Frame with Waterproof Cover



Specification -	2x20 LED Tube	2x40 LED Tube
Length -	1200 mm (48 inches, each)	2400 mm (96 inches, each)
Wattage -	18W–20W (each tube)	36W–40W (each tube)
Luminous Output (lm) -	1600–2000 (combined)	3200–4000 (combined)
Energy Efficiency -	80–100 lm/W (per tube)	80–100 lm/W (per tube)
Color Temperature (K) -	2700K, 4000K, 6500K	2700K, 4000K, 6500K
Lifespan -	25,000–50,000 hours	25,000–50,000 hours
Voltage -	100–277V AC	100–277V AC
Beam Angle -	120° to 160°	120° to 160°
Body Type -	Frame without Cover Frame with Cover Frame with Waterproof Cover	Frame without Cover Frame with Cover Frame with Waterproof Cover



GARDEN / TRACK LIGHT

TRACK LIGHT ROUND MODEL



Material -	Steel, Plastic or Aluminium
Power -	20W, 30W, 40W, 50W
Input Voltage -	100 - 240 V
Color Grade -	2700K, 4000K, 6500K
Lifespan -	30000 - 50000 H
Body Color -	Black or White
Beam Angle -	15°-120°
CRI -	80-90
Size (Diameter)	3 inches - 6 inches

TRACK LIGHT LONG MODEL



Material -	Steel, Plastic or Aluminium
Power -	20W, 40W
Input Voltage -	100 - 240 V
Color Grade -	2700K, 4000K, 6500K
Lifespan -	30000 - 50000 H
Body Color -	Black or White
Beam Angle -	15°-120°
CRI -	80-90
Size -	30cm, 60cm

UNDERGROUND LED LIGHT



Material -	Aluminium
Body Color -	Black & Grey
IP Rating -	IP 66
Color Temp -	6K, 3K.
Lm/W -	80
CRI -	80
PF -	> 0.9
Input Voltage -	AC 100 - 240V
Rated Power -	8W, 15W, 40W, 60W.

LED GRADEN BEAM & COB SPIKE LIGHT



Material -	Aluminium or ABS
Body Color -	Black
IP Rating -	IP 66
Color Temp -	6K, 3K, Red, Blue, Green, RGB.
Lm/W -	65
CRI -	70
PF -	60
Input Voltage -	AC 100 - 240V
Rated Power -	7W, 10W, 15W, 20W, 30W, 60W





MAGNETIC LIGHTS

LED MAGNETIC LIGHT GRILL COB MODEL



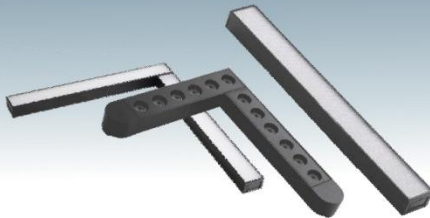
Color Grade - 6K, 4K, 3K
Avaiambe in - 6W, 12W, 18W.

LED MAGNETIC HANGING LIGHT



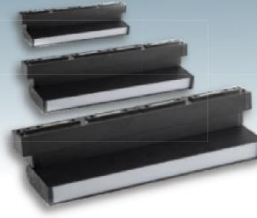
Color Grade - 6K, 4K, 3K
Avaiambe in - 7W, 12W,

LED MAGNETIC LINEAR LIGHT



Color Grade - 6K, 4K, 3K
Avaiambe in - 12W, 24W, 48W

MAGNETIC ROTATABLE DIFFUSER



Color Grade - 6K, 4K, 3K
Avaiambe in - 6W, 12W, 18W.



STRIP LIGHT

LED STRIP LIGHTS (1 LINE)



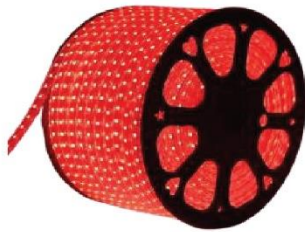
Material -	Aluminium or Plastic
Modes -	Remote controller
Body Type -	Clear.
Color Grade -	2700K / 4000K / 6500K, R,G,B.
Meters -	5 - 10 Meters, 50 Meters.
Strip Lines -	1 Line.
CRI -	>80
Operating Temp -	Minus 20°C to 50°C
Power -	2.5W, 5W.
Input Voltage -	AC 100–240V, DC12-24V.

LED STRIP LIGHTS (2 LINE)



Material -	Aluminium or Plastic
Modes -	Remote controller
Body Type -	Clear.
Color Grade -	2700K / 4000K / 6500K, R,G,B.
Meters -	50 Meters.
Strip Lines -	2 Line.
CRI -	>80
Operating Temp -	Minus 20°C to 50°C
Power -	5W, 7W.
Input Voltage -	AC 100–240V.

LED STRIP LIGHTS (3 LINE)



Material -	Aluminium or Plastic
Modes -	Remote controller
Body Type -	Clear.
Color Grade -	2700K / 4000K / 6500K, R,G,B.
Meters -	50 - 100 Meters.
Strip Lines -	3 Line.
CRI -	>80
Operating Temp -	Minus 20°C to 50°C
Power -	8W, 12W, 15W
Input Voltage -	AC 100–240V.

LED STRIP LIGHTS (WATERPROOF)



Material -	Aluminium or Plastic
Modes -	Remote controller
Body Type -	Froasted.
Color Grade -	2700K / 4000K / 6500K, R,G,B.
Meters -	20 - 50 Meters.
Strip Lines -	Waterproof Line.
CRI -	>80
Operating Temp -	Minus 20°C to 50°C
Power -	5W, 7W, 10W
Input Voltage -	AC 100–240V.





PEDESTAL FAN / INDUSTRIAL WALL FAN/ INDUSTRIAL MIST FAN



Pedestal Fan

- **Sizes:** 16", 18", 20".
- **Speed:** 3-speed control with powerful airflow.
- **Motor:** Energy-efficient copper motor.
- **Oscillation:** Wide-angle oscillation for better air circulation.
- **Material:** Durable and rust-resistant metal body.
- **Power Supply:** 220-240V, 50Hz.

Industrial Wall Fan

- **Sizes:** 18", 20", 24", 30".
- **Motor:** Heavy-duty copper motor.
- **Blades:** Aerodynamic metal blades for powerful airflow.
- **Oscillation:** Wide-angle oscillation for optimal air coverage.
- **Speed Control:** 3-speed settings.
- **Mounting:** Sturdy wall bracket for secure installation.
- **Power Supply:** 220-240V, 50/60Hz.
- **Applications:** Warehouses, factories, workshops, and commercial spaces.

Industrial Mist Fan

Key Features

- **Size:** 26" to 30" blade diameter.
- **Water Tank Capacity:** 40-60 liters.
- **Cooling Range:** Covers up to 30 square meters.
- **Airflow:** High-speed fan with 3 adjustable settings.
- **Material:** Durable, rust-proof body for industrial use.
- **Oscillation:** 90° wide-angle oscillation.
- **Misting System:** Fine mist spray for effective cooling.

Technical Details

- **Power:** 230V/50Hz, 250W – 300W.
- **Noise Level:** ≤65 dB.
- **Water Usage:** 2-3 liters per hour.

Applications:

Ideal for warehouses, workshops, outdoor areas, and industrial spaces.





WALL CEILING FAN



3-Blade Ceiling Fan Specification

Product Name: 3-Blade Ceiling Fan

Blade Material: High-quality aluminum/ABS (as per model)

Fan Size: Available in 48" / 56" blade span

Motor: Energy-efficient, durable copper winding

Speed Settings: 3-speed control for optimal comfort

Airflow: High-performance airflow for superior cooling

Power Consumption: Energy-saving, approx. 50-75W

Voltage: 220V-240V, 50/60Hz

Design: Sleek, aerodynamic blades for silent operation

STEEL EXHAUST FAN



Material - Galvanized or Stainless Steel
Aluminium

Power in Watt - S - M (150-400 CFM): 30-100 W
L (400-1500+ CFM): 100-500 W

Duct Size - 4-inch to 6-inch ducts
8-inch to 12-inch ducts

Input Voltage - 120V / 220V(AC)
12V / 24V(DC) for Solar Support

Color - Black, Grey, Silver

Noise Level - 0.5-4+ sones

EXHAUST FAN



Material - ABS or Polypropylene

Airflow (CFM) - 50 - 500 + CFM

Noise Level - 0.5-4+ sones

Pwr Consumption 10 - 100W

Voltage - 120V / 220V(AC),
12V / 24V(DC)

Duct Size - 4, 6, 8, 10, 12 - Inch

Speed Control - Fixed or Optional

VENTILATING FAN



Material - ABS or Polypropylene

Airflow (CFM) - 50 - 500 + CFM

Noise Level - 0.5-4+ sones

Pwr Consumption 10 - 100W

Voltage - 120V / 220V(AC),
12V / 24V(DC)

Duct Size - 4, 6, 8, 10, 12 - Inch

Speed Control - Fixed or Optional



SOCKETS AND SWITCHES

GENERAL SOCKETS AND SWITCHES FOR COMMERCIAL AND INDUSTRIAL USE



1 GANG 1 WAY



2 GANG 1 WAY



3 GANG 1 WAY



4 GANG 1 WAY



DOOR BELL SWITCH



SOCKET WITH DP SWITCH



SATELITE SOCKET



TV & INTERNET SOCKET



HEATER SWITCH



A/C SWITCH



DOUBLE SOCKET WITH DP SWITCHES



A/C SWITCH



SOCKETS AND SWITCHES

BLACK GREY PEARL GOLD PIANO



13A 1 GANG 1 WAY SWITCHES (7 X 7)



13A 2 GANG 1 WAY SWITCHES (7 X 7)



13A 3 GANG 1 WAY SWITCHES (7 X 7)



13A 4 GANG 1 WAY SWITCHES (7 X 7)



13A SOCKET WITH SWITCH (7 X 7)



13A TELEPHONE AND INTERNET SOCKETS (7 X 7)





SOCKETS AND SWITCHES



13A TELEVISION SOCKETS (7 X 7)



13A USB SOCKET WITH SWITCH (7 X 7)



45A A/C SWITCHES & 20A HEATER SWITCHES



13A DOUBLE SOCKETS (7 X 14)



45A A/C SWITCHES (7 X 14)



INDUSTRIAL SOCKET

Mobile Socket & Plugs



Amphere	Poles	Vol age	Guage	Hertz	Ingress protection
16 / 32 / 63 / 125	3,4,5	110V	4H	50/60Hz	IP 44 & 67
16 / 32 / 63 / 125	3,4,5	230V	6H	50/60Hz	IP 44 & 67
16 / 32 / 63 / 125	3,4,5	400V	9H	50/60Hz	IP 44 & 67
16 / 32 / 63 / 125	3,4,5	500V	7H	50/60Hz	IP 44 & 67
16 / 32 / 63 / 125	3,4,5	>50-500V	10H	50/60Hz	IP 44 & 67
16 / 32 / 63 / 125	3,4,5	>50V others	1H	50/60Hz	IP 44 & 67





INDUSTRIAL SOCKETS Flanged & Wall mount Socket & Plugs



Amphere	Poles	Voltage	Guage	Hertz	Ingress protection
16 / 32 / 63 / 125	3,4,5	110V	4H	50/60Hz	IP 44 & 67
16 / 32 / 63 / 125	3,4,5	230V	6H	50/60Hz	IP 44 & 67
16 / 32 / 63 / 125	3,4,5	400V	9H	50/60Hz	IP 44 & 67
16 / 32 / 63 / 125	3,4,5	500V	7H	50/60Hz	IP 44 & 67
16 / 32 / 63 / 125	3,4,5	>50-500V	10H	50/60Hz	IP 44 & 67
16 / 32 / 63 / 125	3,4,5	>50V others	1H	50/60Hz	IP 44 & 67





CABLE LUGS AND TERMINALS



1. THHN/THWN-2 (Thermoplastic High Heat-Resistant Nylon-Coated)

- **Material:** Copper or Aluminum
- **Insulation:** Thermoplastic with a nylon coating
- **Temperature Rating:** 90°C (dry) / 75°C (wet)
- **Voltage:** Rated up to 600V
- **Sizes in AWG:** 1,2,3,4,6,8,10,12,14
- **Color:** Red,Black,Green,Yellow,Brown,Grey
- **Uses:** Conduits, cable trays, and ducts in commercial and industrial buildings.
- **Key Features:** Heat and moisture-resistant, suitable for harsh environments.

3. PVC Insulated Wires

- **Material:** Copper or Aluminum
- **Insulation:** Polyvinyl chloride (PVC)
- **Temperature Rating:** 70°C (general) to 90°C (heat-resistant)
- **Voltage:** Rated up to 600V
- **Sizes:** 0.5mm, 1.0mm, 1.5mm, 2.0mm, 2.5mm, 3.0mm, 3.5mm, 4.0mm, 6.0mm, 8.0mm, 10.0mm Etc
- **Cores:** 2,3,4, Multiple cores..!
- **Uses:** Suitable for internal wiring in commercial and residential buildings.
- **Key Features:** Flame-retardant, affordable, and flexible for installation.



CABLE LUGS AND TERMINALS



Cable Lugs and Terminals

Our range of high-quality cable lugs and terminals ensures reliable electrical connections for industrial and commercial applications. Made from premium materials, each terminal is designed for durability and optimal conductivity. Available in multiple types, including ring, spade, fork, and bullet connectors, our terminals are suitable for various wiring needs and compatible with multiple wire gauges.

Features:

- **Material:** Corrosion-resistant copper and aluminum
- **Insulation Options:** Insulated and non-insulated types
- **Connector Types:** Ring, spade, fork, bullet, and crimp connectors
- **Voltage Rating:** Suitable for low to high-voltage applications
- **Temperature Resistance:** Rated to withstand high temperatures

All sizes are available upon request to meet your specific project requirements.



STEEL CONDUITS





STEEL CONDUITS



EMT FITTINGS & ELBOWS



IMC/RMC FITTINGS
& ELBOWS



FLEXIBLE METALIC
CONDUIT FITTINGS



STRUT CHANNELS
AND ACCESSORIES



CONDUIT BODIES



UTILITY BOXES
& COVERS



STEEL CONDUITS

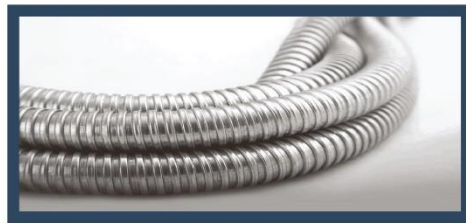


**PVC COATED RMC
CONDUITS & FITTINGS**





STEEL CONDUITS







مؤسسة أثير عبدالله بن شليويح المقاطي التجارية
Ather Abdullah Bin Shliouh Trading Est.







مؤسسة أثير عبدالله بن شليويح المقاطي التجارية
Atheer Abdullah Bin Shliouh Trading Est.

Importer & Wholesaler



Contact Us:
Muath Ibin Jabal St. , Al-amamrah Dammam KSA.